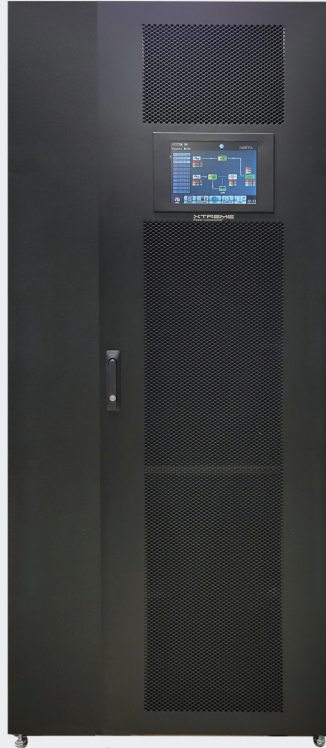


XTREME POWER CONVERSION X90-5S

5 Slot Modular Online UPS // 480VAC 3W Three-Phase 50kW-350kW



Scalable, Modular, Compact 480V UPS

The X90-5S is a scalable modular online double conversion UPS that protects critical data and equipment from power problems while supplying clean and reliable network grade power.

Optional 65kAIC maintenance bypass in slim matching cabinet providing the most compact footprint and reduced installation costs.

Also additional configurations, reference the X90-2S www.xpcc.com/x90-2s and the X90-10S www.xpcc.com/x90-10s

PRODUCT SNAPSHOT

- › Capacities: 50kW, 70kW, 100kW, 140kW, 150kW, 200kW, 210kW, 250kW, 280kW, 350kW
- › 65kAIC Rating
- › Hot swappable power and battery modules
- › UL-1778, cUL, FCC A, RoHS, TAA
- › 2 year warranty (USA and Canada)

FEATURES

Highest availability— system can be configured with redundant power and battery modules

Maintenance bypass— optional slim maintenance bypass enables service and repair

Reduce energy cost— online efficiency up to 96.5% and ECO mode up to 99%

Scalable—add power or battery modules when requirements change

Power module ratings— 70kW modules available

Full front access— no rear clearance required for maintenance

Large Touchscreen LCD display—10" display provides graphic display including status and alarms

Dual or single utility input— provides maximum installation flexibility

Cable Access —top or bottom cable access

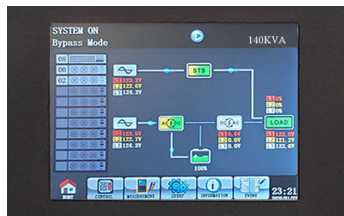
MODEL SELECTION GUIDE

MODEL NUMBER		X90-5S50k	X90-5S70k	X90-5S100k	X90-5S140k	X90-5S150k	X90-5S200k	X90-5S210k	X90-5S250k	X90-5S280k	X90-5S350k
CAPACITY	Power rating	50kW	70kW	100kW	140kW	150kW	200kW	120kW	250kW	280kW	350kW
CABINET	X90-5S UPS: power modules	Up to 350kW (5 x 70kW) or up to 250kVA (5 x 50kW)									
	X90-BC: battery modules	Up to 36 battery modules									
INPUT	Voltage / frequency nominal	480VAC (3W), 50/60Hz auto-sensing									
	Voltage / frequency range	329 – 520VAC (L-L), 40–70Hz									
OUTPUT	Voltage	480VAC (3W)									
	Frequency	40–70Hz									
	Efficiency	Up to 96.5% online mode or 99% ECO mode									
	Overload capacity	105%-110% for 60min; 110%-125% for 10min; 126%-150% for 1min; >150% for 200ms									
BATTERY SYSTEM	Nominal voltage	+/-240VDC									
	Charge Current (programmable)	18A	36A	54A	72A	90A					
DIMENSIONS & WEIGHTS	UPS & BC enclosure (W x D x H)	31.5 x 42 x 79 in 787 lbs (UPS) / 23.6 x 42 x 79 in 838 lbs (BC)									
	Bypass enclosure (W x D x H)	11.8 x 42 x 79 in / 400 lbs									
	Power & battery module	17.2 x 31.2 x 5.25 in / 104 lbs (PM) 17.2 x 31.2 x 5.25 in / 73 lbs (BM)									
ENVIRONMENT	Temperature	0–40°C (32–104°F)									
	Altitude	5,200 ft above sea level									
	Audible noise (typical)	< 69dBA at 1m									
APPROVALS		UL-1778, cUL, FCC A, RoHS, TAA									
WARRANTY		2 years (USA and Canada)									
COMMUNICATIONS INTERFACE		RS-232, EPO, intelligent slot for optional cards (Web/SNMP, Relay, Modbus)									
INCLUDED IN BOX		User manual, RS-232 cable, unloading ramp, ViewPower Software									
AVAILABLE OPTIONS		External maintenance bypass, battery temperature sensor									

BATTERY RUNTIMES

Battery Modules	X90-5S + 1*X90-BC						X905S + 2*X90-BC									
	16	20	24	28	32	36	40	44	48	52	56	60	64	68	72	
70kW	8	10	13	16	19	22	25	28	31	34	38	41	44	48	51	
140kW	-	-	-	6	8	9	10	12	13	15	16	18	19	21	22	
180kW	-	-	-	-	5	6	7	8	10	11	12	13	14	15	16	
210kW	-	-	-	-	-	-	6	7	8	9	10	10	11	12	13	
280kW	-	-	-	-	-	-	-	-	-	5	6	7	8	8.5	9	
300kW	-	-	-	-	-	-	-	-	-	5	6	7	7.5	8		
350kW	-	-	-	-	-	-	-	-	-	-	-	-	5	6	6.5	

Runtimes are shown in minutes and will vary based on battery age and site conditions. For longer runtimes or custom battery configurations, please contact sales@xpcc.com



Touch LCD Display

65kAIC breakers
Main, Maintenance
Bypass & Output
Breakers

Top/Bottom Cable Entry



Maintenance Bypass
(door removed)



X90-5S 350kW UPS
(door removed)

UPS Enclosure
Includes slots for
up to (5) 70kW
power modules



X90-BC
(door removed)

X-TREME
Power Conversion®

Protect your business.

XPC USA / Denver, CO / sales@xpcc.com

XPC EMEA / Rotterdam, NL / emea@xpcc.com

www.xpcc.com

©2022 Xtreme Power Conversion Corporation. All Rights Reserved. P915-10.01U (Rev 6/8/22)